

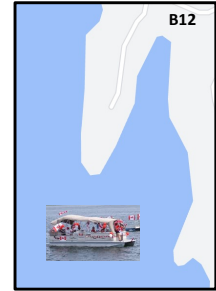
# BLPOA Communique # 4-2022

## 30 June 2022

### Happy Canada Day!



### Bass Lake Annual Flotilla



Just a reminder that once gain the annual Bass Lake Flotilla will be celebrating Canada Day with a launch at 2 pm tomorrow. The lead pontoon boat will be Rad Thomson/B12 and they will be marshalling just off the end of B12 peninsula. Join in the fun!

### Lake Water Level

Our newly constructed berm has functioned as intended this Spring season, allowing the winter run-off to gradually outflow to reach a designed target level of 134.52 on 01 July. At present we are just 2 cms below that target.

Bass Lake Water Level Readings – 2022	
Date	2021 Elevation MASL
08 April	134.66
25 April	134.61
09 May	134.58
17 May	134.55
15 June	134.52
01 July	134.50

### Surface Water Protection (SWP)

The Rideau Valley Conservation Authority has recently begun a project to study private drinking water systems, surface water intakes and wells, on select lakes in the Rideau Valley Watershed and Bass Lake has been selected.

The study will be characterizing the selected lakes and estimate the number of homes utilizing surface water as their source of drinking water through research and community outreach. RVCA has produced a survey that they are asking as many lake homeowners as possible to take a moment to complete and submit. Survey link:

<https://www.bit.ly/3nnl6JL>

There are 234 developed waterfront properties on Bass Lake and it is estimated that 102 waterfront properties have a drilled well (*2020 Septic Inspection Program findings and Ontario Provincial Well Records*). This indicates that 55% of the homes are drawing surface water from our lake.

A copy of the background sheet is included as part of this Communique and information for this project will be posted on the following web page:

<https://www.mrsourcewater.ca/en/protect-your-drinking-water/best-practices>

# A Look at Private Drinking Water Systems in Upper-Middle Rideau Valley Watershed

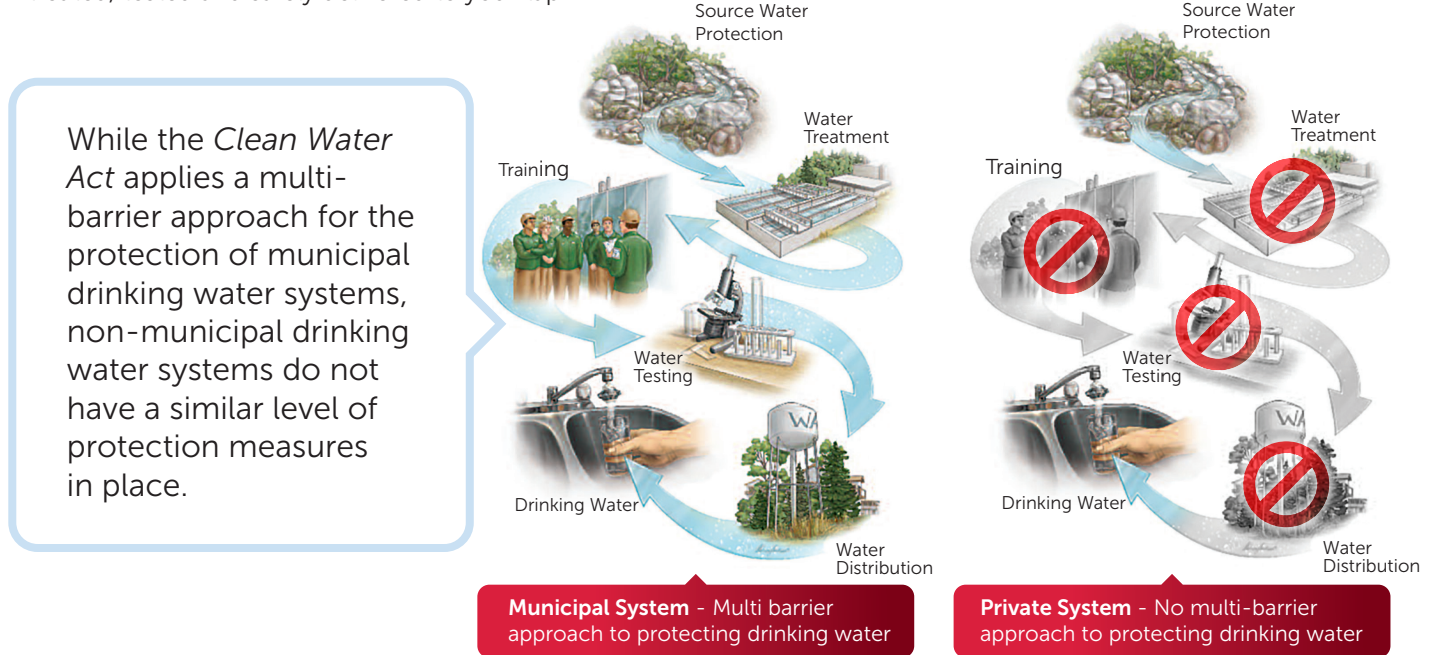
The Mississippi-Rideau Source Protection Region (MRSPR) has begun a project to study private drinking water systems on select lakes in the Rideau Valley watershed, thanks to funding from the Ministry of the Environment, Conservation and Parks (MECP).

In Phase I of this project, beginning Summer 2022, MRSPR staff will characterize selected lakes (see map, Figure 1), conduct a Threats and Vulnerability Analysis, conduct outreach to lake residents, and estimate the number of residences in the vicinity which source their drinking water from private wells and surface water intakes. One component of the outreach is to conduct a survey ([www.bit.ly/3nnl6JL](http://www.bit.ly/3nnl6JL)) of lake residents that will be available from July 1st to August 31st 2022.

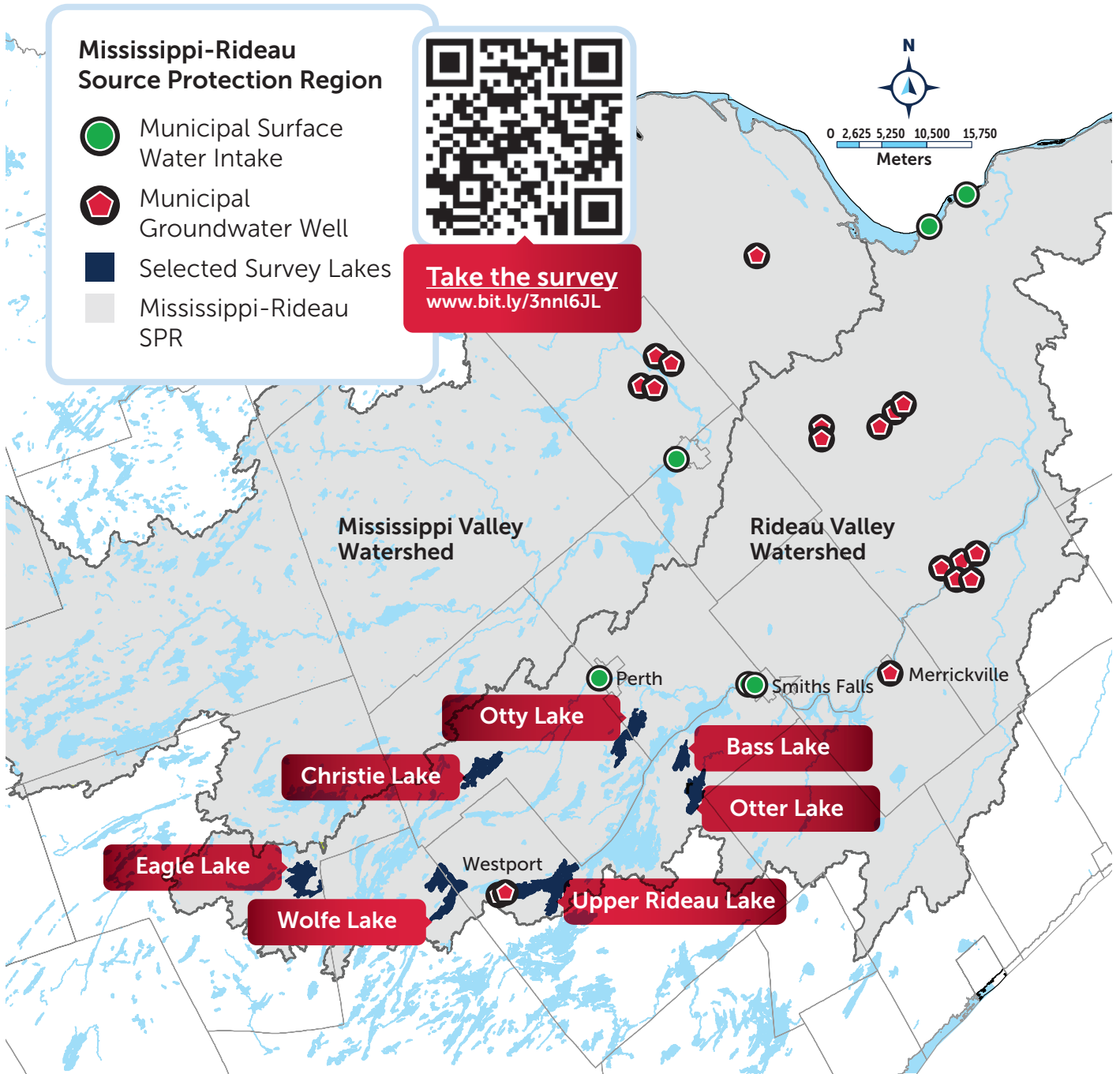
Phase II will include the development of educational materials for individuals with private wells and private surface water intakes to promote safe drinking water practices, as well as details on relevant local measures to address specific drinking water threats (i.e., septic re-inspection program).

## Background:

Ontario's *Clean Water Act* was created to ensure all drinking water systems are protected from current and future contamination. However, the MRSPR is currently focused on source protection for municipal drinking water systems, which complements the work of water treatment plant operators who ensure municipal drinking water is properly treated, tested and safely delivered to your tap.



Concerns have been raised about the safety of non-municipal water and that homeowners may lack adequate knowledge about proper private water treatment systems. To address these concerns, the MECP released an informational guide, *Best Practices for Source Water Protection*, to help residents assess their risks and properly protect their drinking water sources from contamination. [www.ontario.ca/document/best-practices-source-water-protection](http://www.ontario.ca/document/best-practices-source-water-protection)



Projection: Universal Transverse Mercator, NAD83, Zone 18 North

Produced by the Mississippi-Rideau Source Protection Region, under License with the Ontario Ministry of Natural Resources and Forestry ' Queen's Printer or Ontario, 2022.

While the MRSPR makes every effort to ensure that the information presented is sufficiently accurate for the intended uses of the map, there is an inherent margin of error in all mapping products, and accuracy of the mapping cannot be guaranteed for all possible uses. All end-users must therefore determine for themselves if the information is suitable for their purposes.



For more information on the project contact:

**Maren Catt**  
 Source Water Intern

[maren.catt@rvca.ca](mailto:maren.catt@rvca.ca)

or call 613-692-3571, extension 1197